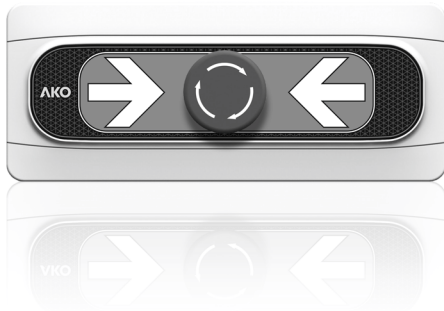


**AKO**

GB 5532H602 Ed.01

CE Trapped person alarm push-button.  
Quick guide

**AKO-55326**

**AKO ELECTROMECÁNICA, S.A.L.**  
Avda. Roquetes, 30-38  
08812 • Sant Pere de Ribes.  
Barcelona • Spain.

Tel.: +34 902 333 145  
Fax: +34 938 934 054  
[www.ako.com](http://www.ako.com)

We reserve the right to supply materials that might vary slightly to those described in our Technical Sheets. Updated information is available on our website

355532602 Rev.00 2017

## Warnings

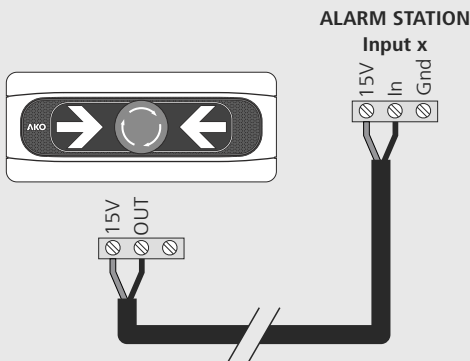


The alarm and pushbuttons must be installed in a place protected from vibrations, water and corrosive gases, where the ambient temperature does not exceed the value indicated in the technical data. The station must be installed in a place where the regular presence of people who can alert to the presence of alarms is guaranteed. Neither the alarm nor the pushbutton are suitable for areas classified as potentially explosive.



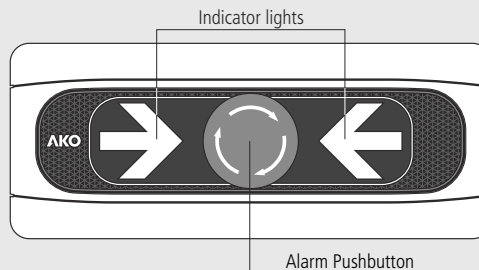
The pushbutton must be installed inside the cold room, in a visible place and no higher than 125 cm from the ground.

## Wiring



Always disconnect the power supply to do the wiring.

The wiring between the pushbutton and the station must **NEVER** be installed in a conduit together with power, control or power supply cables.



## Configuration


Use in: AKO-55424 / AKO-555241 / AKO-555242 / AKO-558241 / AKO-558242

### Step 1:

Once the pushbutton has been connected, connect the power supply of the station. Before 2 minutes have passed, press the "AUTOCONFIG" pushbutton 5 consecutive times.

### Step 2:

Press the "AUTOCONFIG" pushbutton for 5 seconds; the alarm will emit 5 short tones. Configuration is completed.

 For a correct detection of inputs, all devices must be correctly connected and in NO ALARM mode, including the devices connected in digital inputs.

Once configured, the display shows the indicator corresponding to the device detected at each input in green:

 Luminous pushbutton

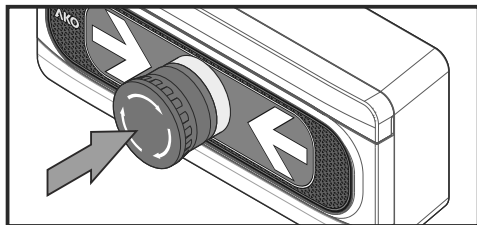
Use in: AKO-55323 / AKO-55123 / AKO-55120

The unit is supplied as ready-to-use; no configuration is required

## Operation

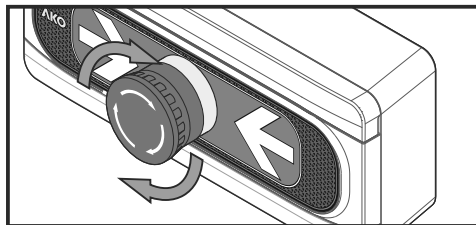
### Activating the alarm

Press the alarm pushbutton



### Deactivating the alarm

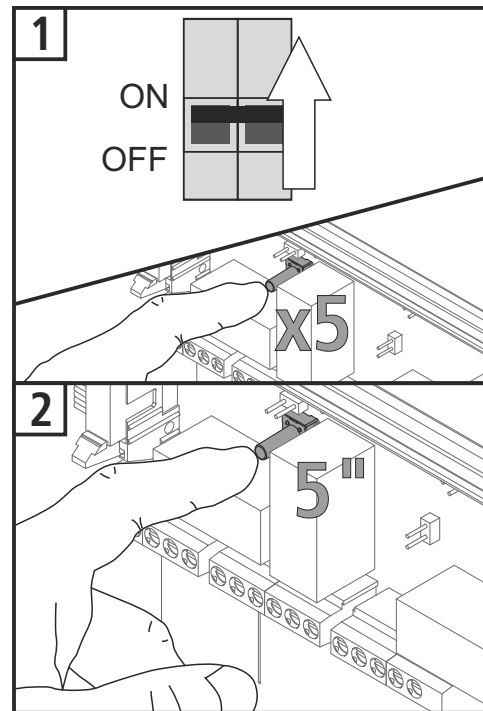
Slightly rotate the alarm pushbutton in the clockwise direction.



## Technical specifications

Power supply..... 15 Vdc  $\pm$  3 Vdc  
Working ambient temperature..... -50 °C to 50 °C  
Storage ambient temperature ..... -50 °C to 70 °C  
Protection degree ..... IP 65

Installation category..... II s/ EN 61010-1  
Pollution degree..... II s/ EN 61010-1  
Maximum pushbutton wiring distance ..... 300 m  
Dimensions ..... 202 mm (W) x 82 mm (H) x 84.4 mm (D)



## Maintenance

Clean the surface of the unit with a soft cloth, water and soap.

Do not use abrasive detergents, petrol, alcohol or solvents, as this might damage the sensor.