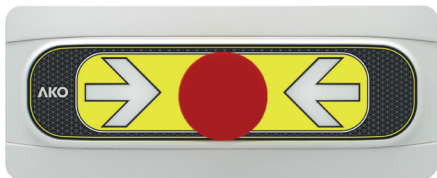


AKO

en 5532H702 Ed.01

 Air extraction pushbutton

Instructions



AKO-55327

AKO ELECTROMECÁNICA, S.A.L.
 Avda. Roquetes, 30-38
 08812 • Sant Pere de Ribes.
 Barcelona • Spain.

www.ako.com

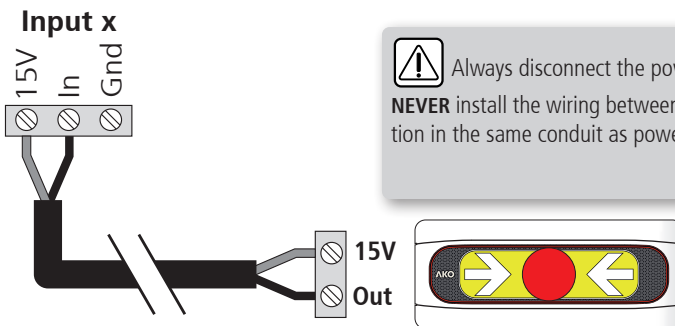
We reserve the right to supply materials that might vary slightly to those described in our Technical Sheets. Updated information is available on our website.

Cautions



The alarm and pushbuttons must be installed in a place protected from vibrations, water and corrosive gases, where the ambient temperature does not exceed the value indicated in the technical data. Neither the alarm nor the pushbutton are suitable for areas classified as potentially explosive. The pushbutton should be installed in a visible location and no higher than 125 cm from the ground. The **AKO-55327** pushbutton is exclusively compatible with the **AKO-555244** station.

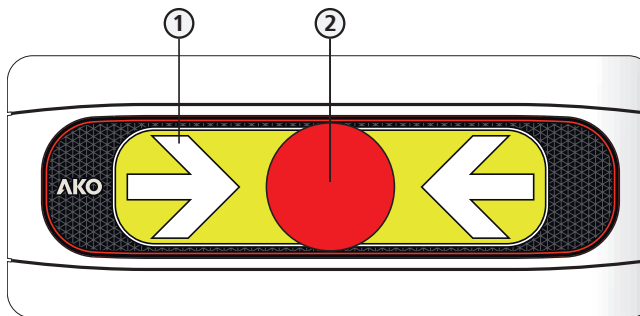
Wiring



Always disconnect the power supply to do the wiring. **NEVER** install the wiring between the pushbutton and the station in the same conduit as power, control or supply cables.

Operation

A single press activates or deactivates forced ventilation (Relay RY1 of the station).



1. Light indicator
2. Extraction activation pushbutton

355532702 Rev.00 2024

Configuration of the AKO-555244 station (wizard)

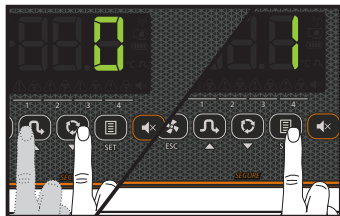


The pushbutton must be connected to the station before initiating the configuration process

Disconnect the power, reconnect it and press the following keys in sequence within 8 seconds (one after another, not simultaneously) ▲, ▼, SET.

Step 1:

Select option 1 in InI and press SET.

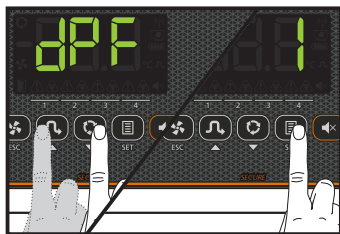


Step 2:

The display shows the message **dFP** (default parameters) with two options to choose from:

- 0: Only change the parameters which affect the wizard. The other parameters will remain the same.
- 1: All parameters return to their factory setting except those which have been modified by the wizard.

Press SET to accept the changes.



Step 3:

The input auto-detection process begins; the display sequentially lights up all inputs in green while detection takes place.



After a few seconds, the auto-detection concludes with 5 short beeps and the device restarts, entering normal operation.

Maintenance

Clean the surface of the unit with a soft cloth, water and soap.

Do not use abrasive detergents, petrol, alcohol or solvents, as this might damage the sensor.

Technical specifications

| | |
|--|--------------------------------------|
| Power supply..... | 15 Vdc ± 3 Vdc |
| Working ambient temperature | -50 °C to 50 °C |
| Ambient storage temperature | -50 °C to 70 °C |
| Protection degree | IP 65 |
| Installation category..... | II as per EN 61010-1 |
| Degree of pollution | II as per EN 61010-1 |
| Maximum pushbutton cable distance..... | 300 m |
| Dimensions | 202 mm (W) x 82 mm (H) x 84.4 mm (D) |